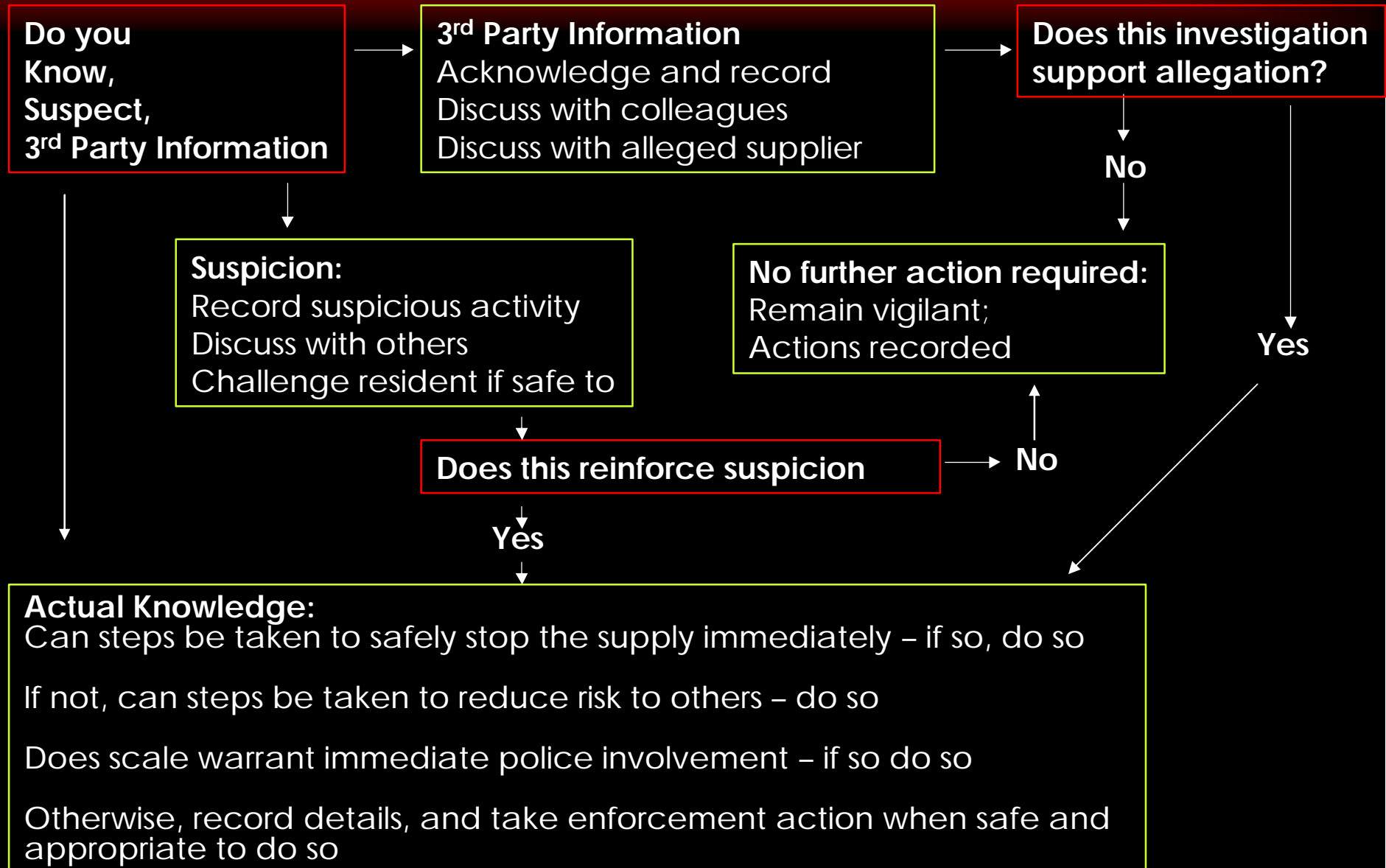


# Drugs Policy Flow Charts

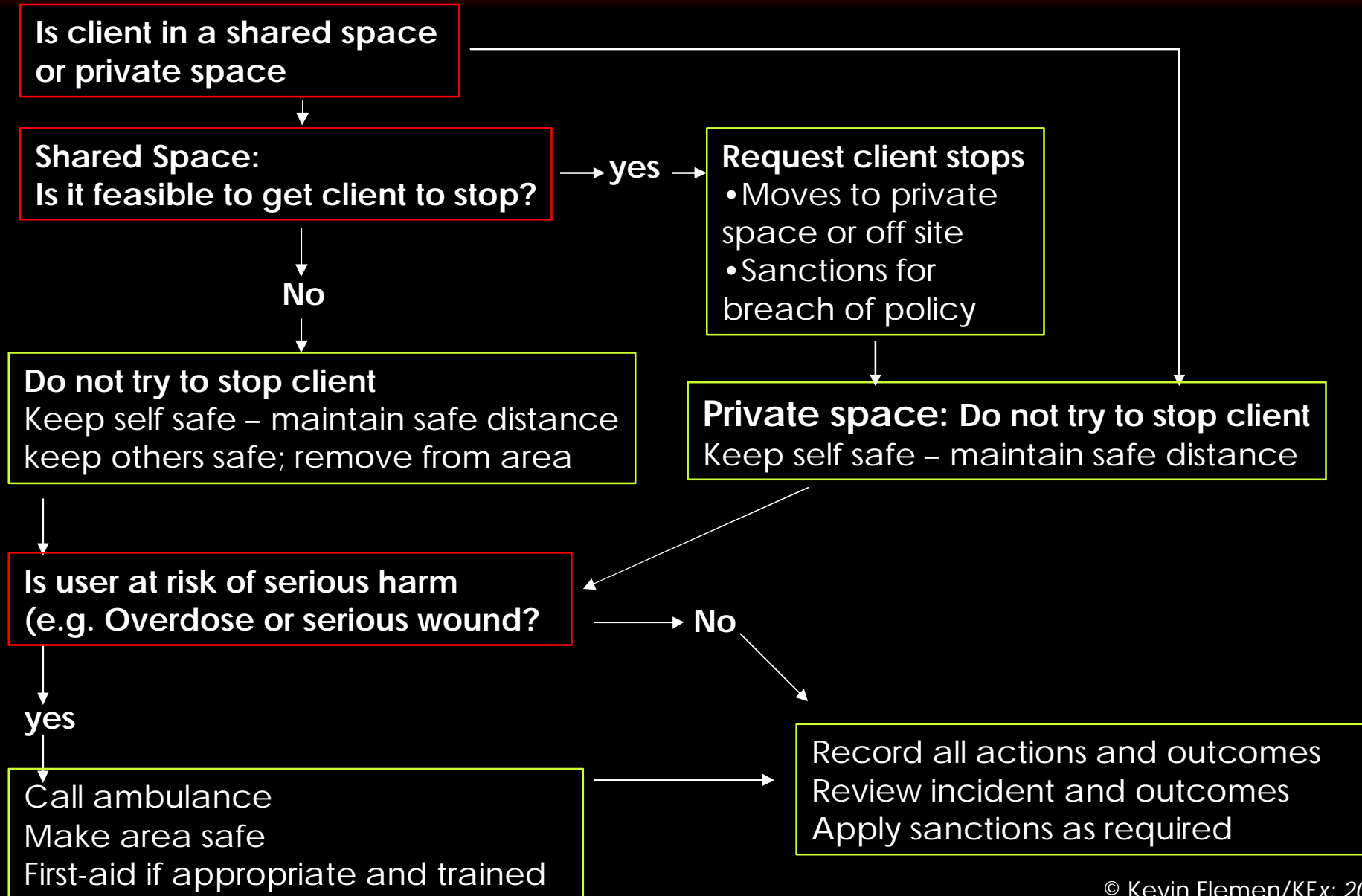
**KFX**  
Learning of Substance

drugs  
and  
housing  
.co.uk

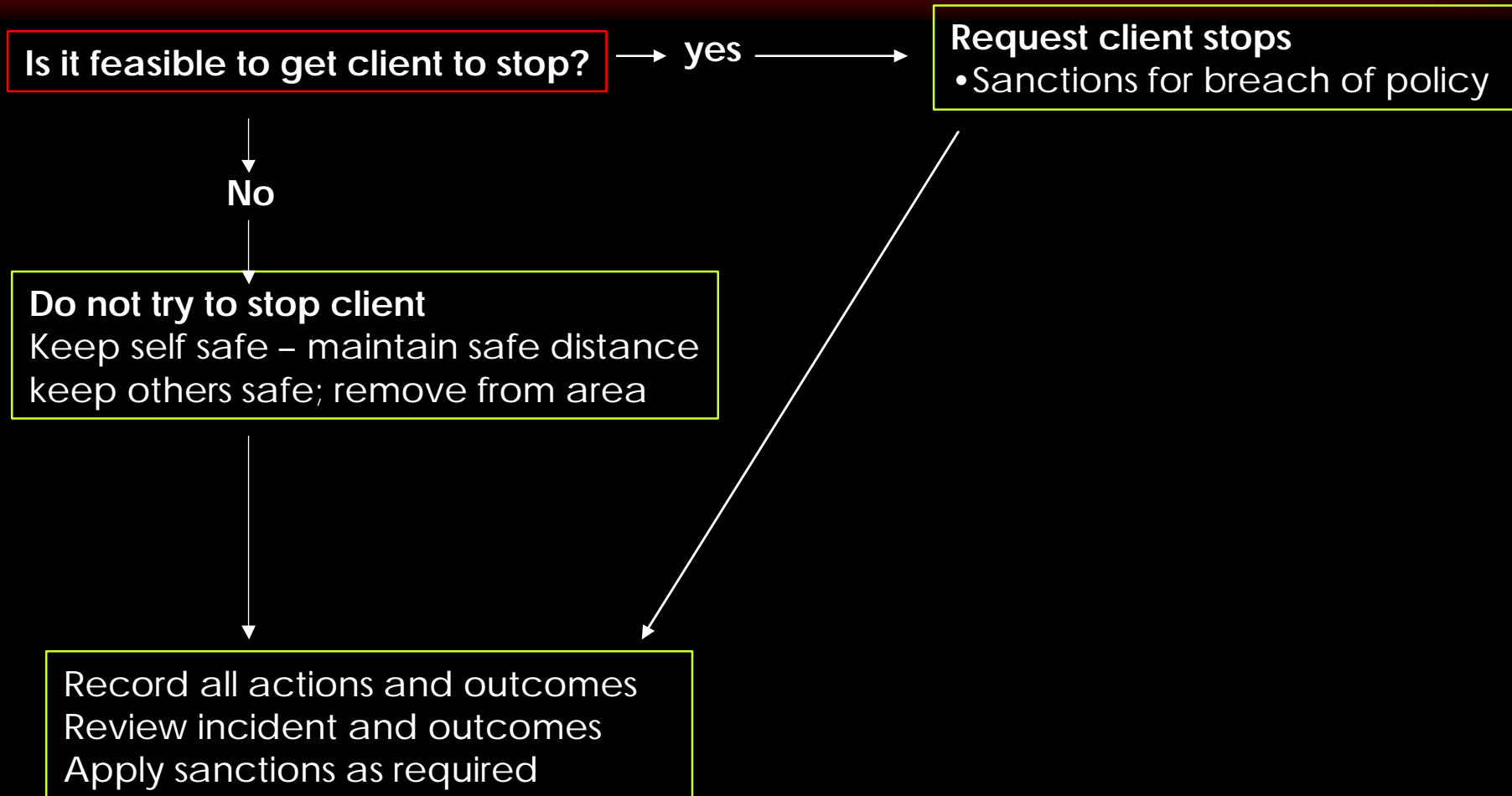
# Knowing/Suspecting Supply Flow Chart



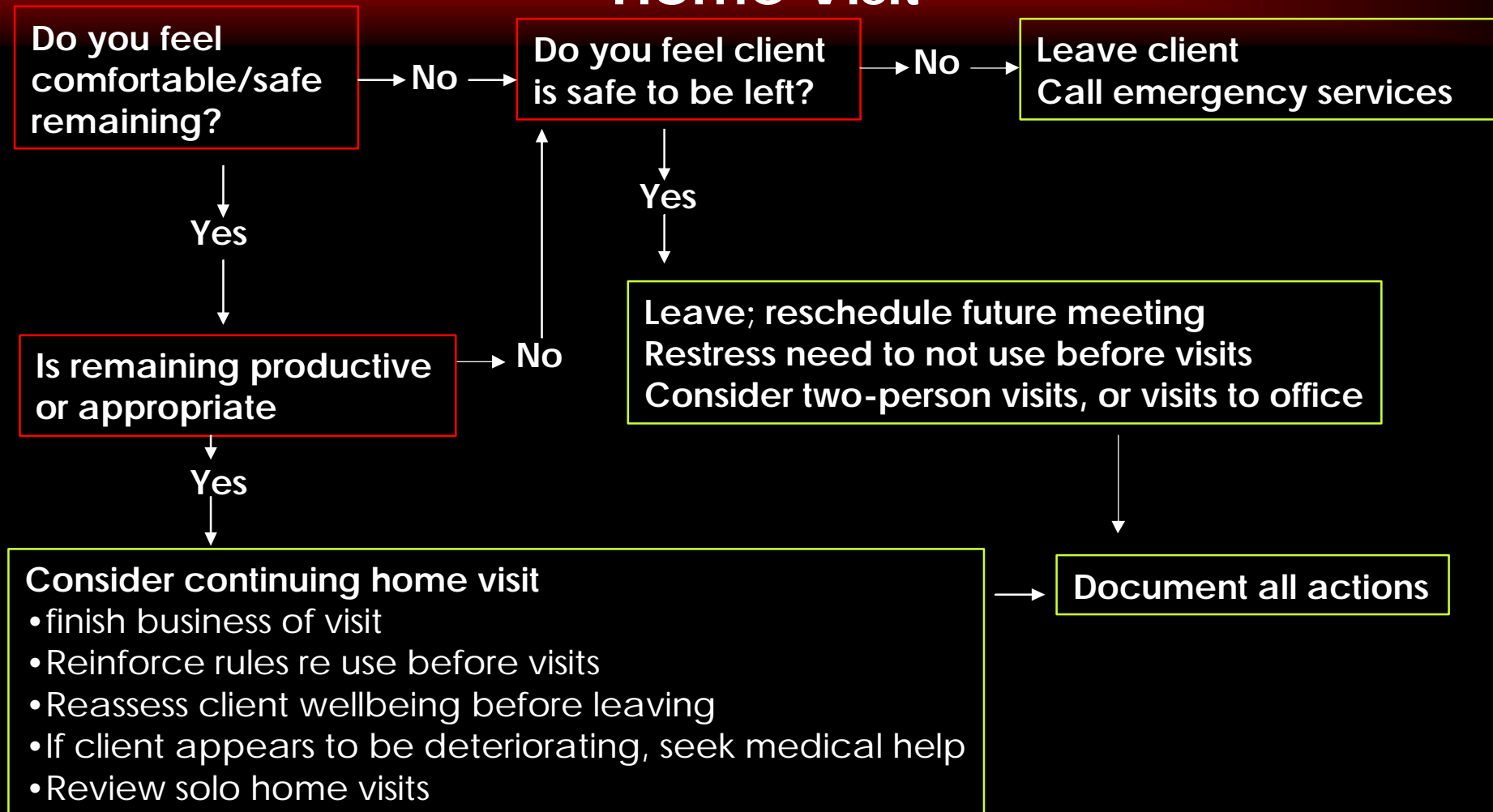
# Use on Site (except cannabis) Flow Chart



# Use on Site (cannabis) Flow Chart



# Use/Intoxication Home Visit



# Opiate Overdose – Intervention

**Make Sure You and Others around are SAFE first**

Is client conscious:

yes →

assess what used  
assess if client is having bad response  
assess need for ambulance  
monitor

No

**call ambulance**

Assess Respiration

Is client breathing

yes →

Airway  
Pulse  
Recovery  
position  
monitor

No

Check pulse

Pulse  
present →

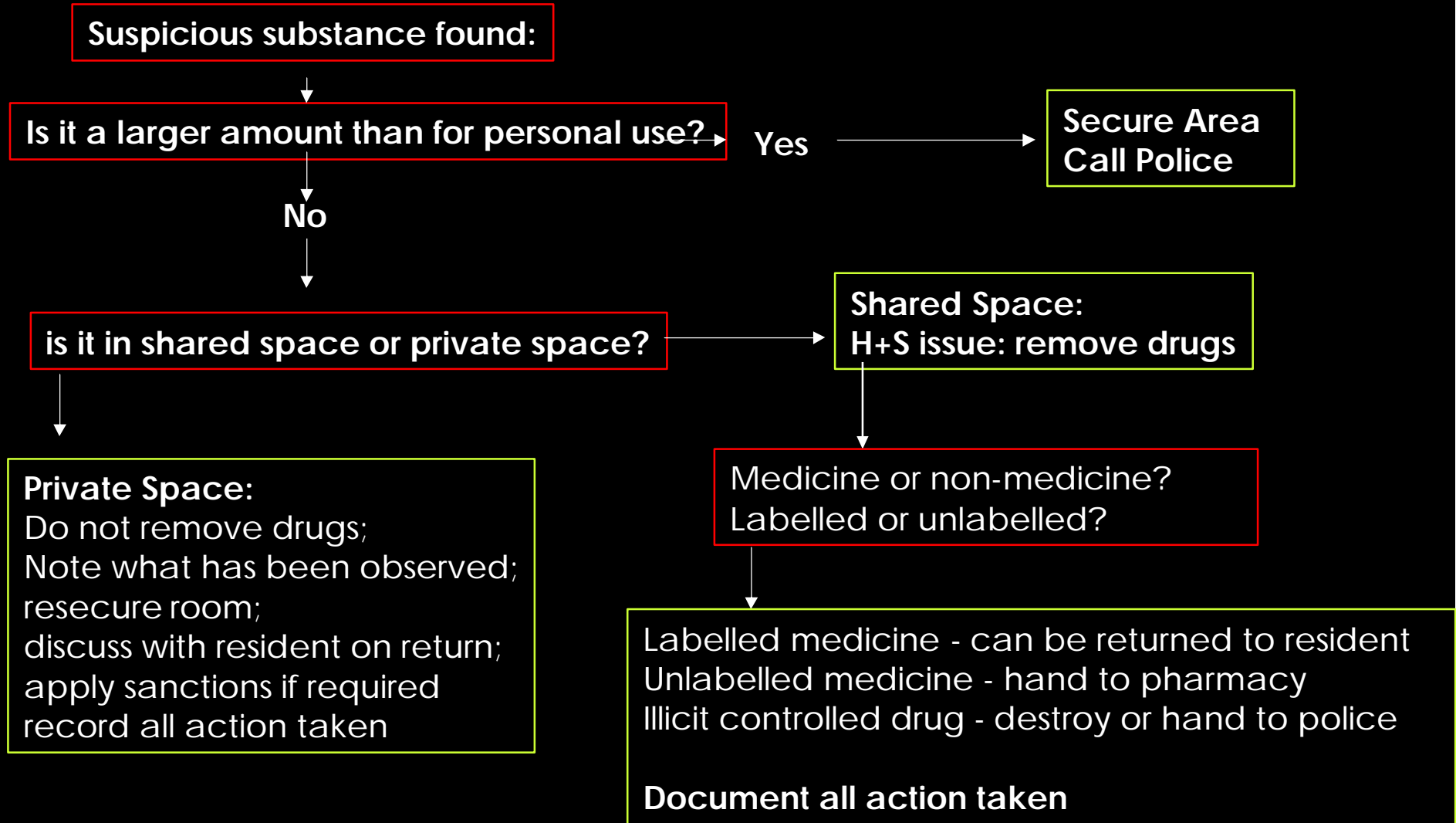
Assist with breathing  
Using mouth to mouth

No pulse

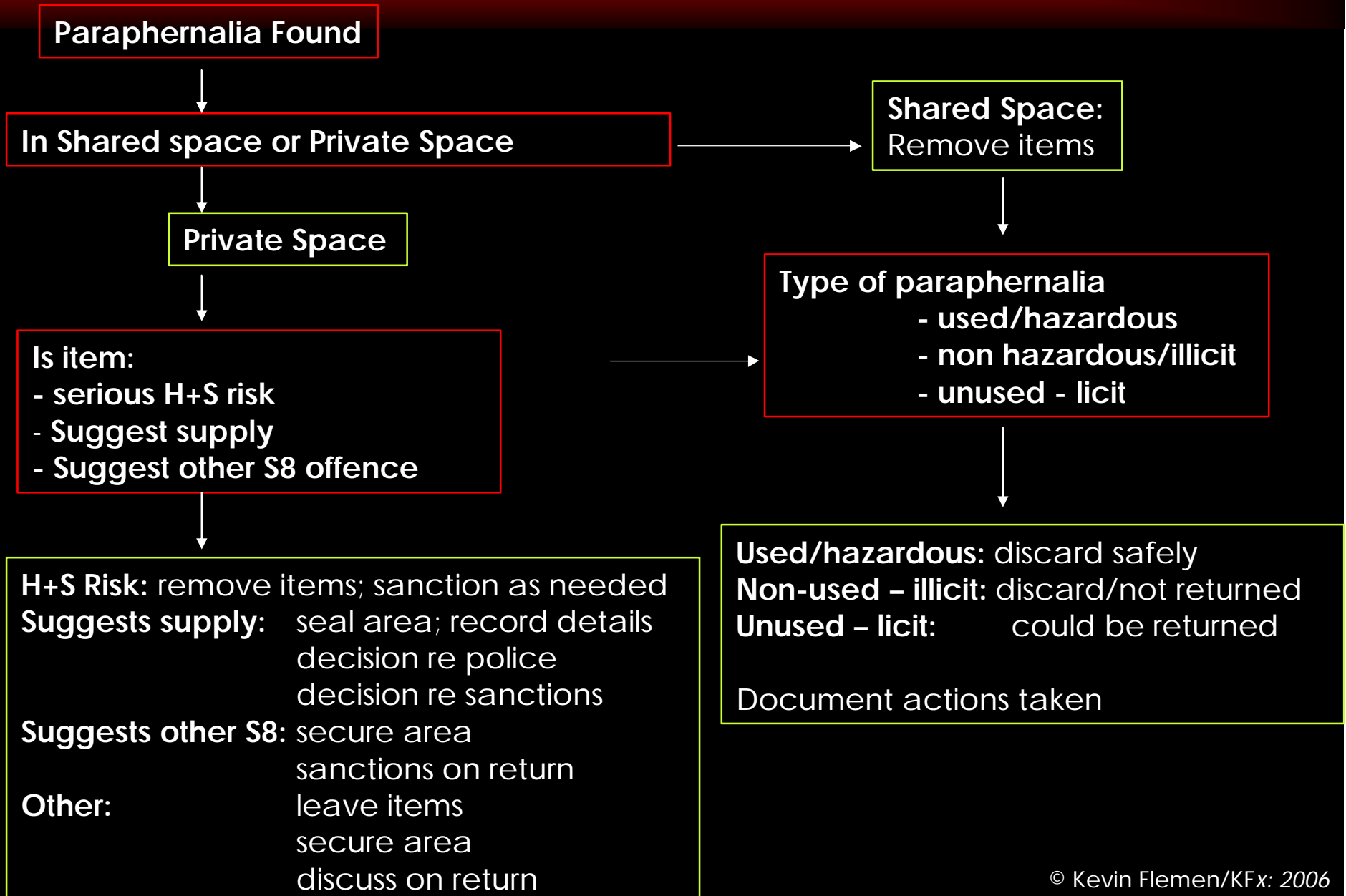
**CPR**

**Info to paramedics, retain drugs/paraphernalia,  
record all information, debrief**

# Finding Drugs Flow-Chart

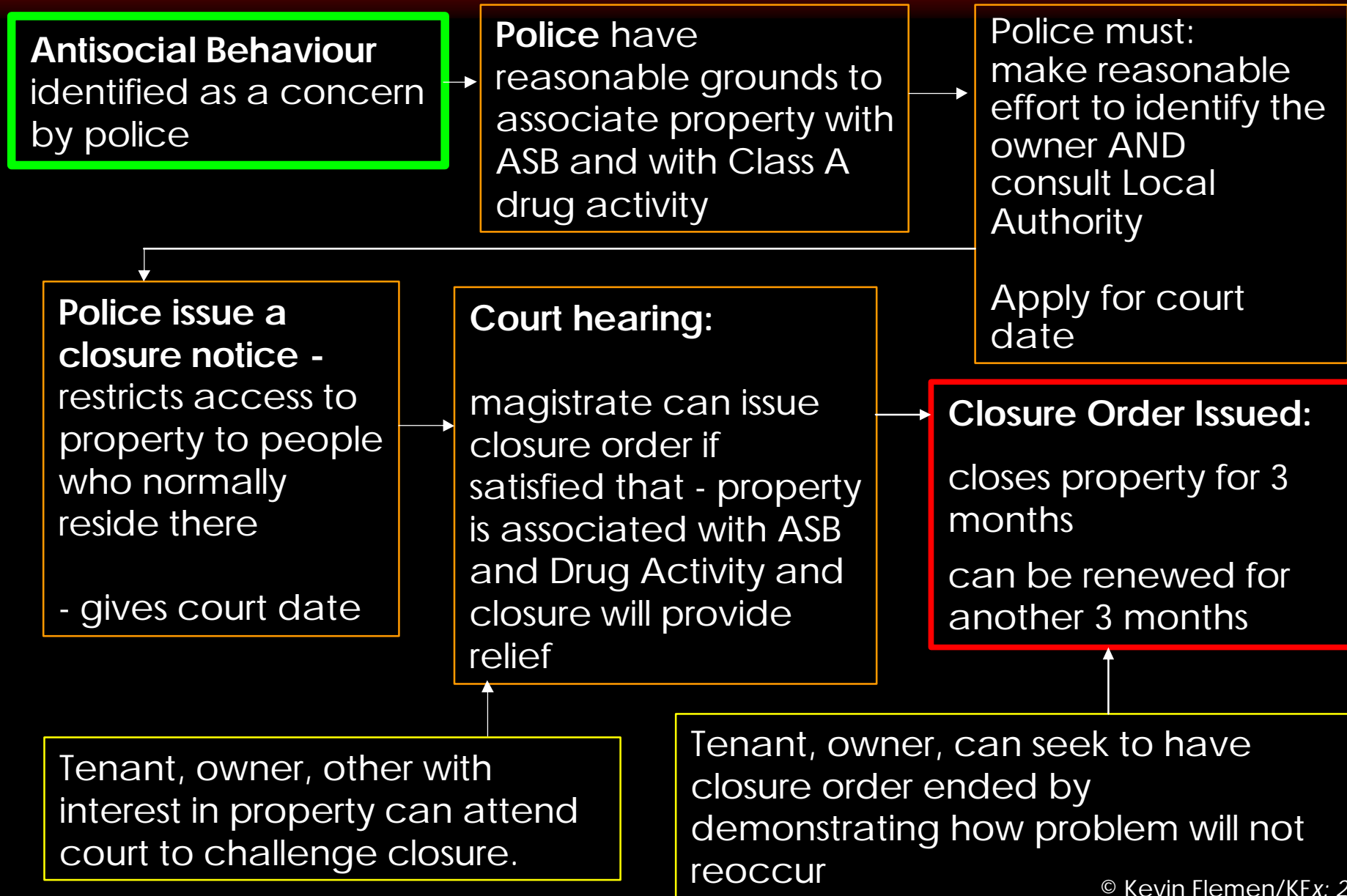


# Finding Paraphernalia Flow-Chart





# Stages of Securing a Closure Order Antisocial Behaviour Act



# Further Information and Guidance



[www.ixion.demon.co.uk](http://www.ixion.demon.co.uk)  
[kfx@ixion.demon.co.uk](mailto:kfx@ixion.demon.co.uk)



[www.drugsandhousing.co.uk](http://www.drugsandhousing.co.uk)